

Honeywell



2019 PRICE LIST | Retail Price List - 1/1/2019

MORNING PRIDE[®] RANGER[™]

Certified to ISO 9001:2015 Manufacturing

GENERAL

1. All items returned for repair work must be cleaned using seamstresses will not be able to etc.) may not be returned for credit. Check your order carefully work on them per Ohio O before submitting.
gear yourself or request cleaning through the Honeywell PPE Cleaning & Care Facility.
2. Garments ordered incorrectly (size, color, materials, opti
3. If you need help, please contact our Customer Service De

The cleaning/inspection fee is in addition to any non-warranty repair charges. If you wish to request a quote before authorizing non-warranty repairs, please note that on your

PROPER MEASUREMENT FOR PROPER FIT

NOTE: When coat length, sleeve length, shoulder width, back length, inseam, or crotch rise measurements are not provided on an order, the following standard sizing is applied:

Shoulder: Standard shoulder is graded according to chest.

Inseam: Standard inseam is 30".

Crotch Rise: Standard rise is graded according to Coats: Tails[™] coats have a standard length of 29" in front waist size. and 35" in the rear.

Any non-proportional or unusual body dimensions should Sleeve Length: Size 38" chest and under 33" sleeve; be noted on your order so Size 40" to 42" chest – 33 1/2" sleeve; Size 44" chest and allowances (i.e. larger than normal biceps on a weight lifter Please call our Customer Service Department for assistance with any fit challenges.

ORDERING REQUIREMENTS: Coat or Pant

- Model Numbers
- Color of outer shell
- Lettering information (if any): type
- Complete measurements
- Trim: type, color, pattern
- Custom options
- Garment Closures

HOW TO CREATE YOUR PRODUCT NUMBER

The color abbreviations for materials where applicable:

Leather Color:

Final Suffix Color
Z Bronze

Suffix	Color
G	Golden Brown

Black is Standard (STD)
Gold and Gray Optional

B	Black
T	Tan
C	Charcoal
V	Navy
K	Khaki

2	Dark Gold
N	Natural
Y	Yellow (Bright)
D	Gold or Light Gold
S	Silver

Express Delivery Options

Part No.	Item	Price
SV-EXPRESS	The EXPRESS delivery option:	5 Week Express
		4 Week Express
		15% upcharge
		20% upcharge

Please state your choice when ordering "Express".

Structural Turnout Gear - RANGER

	Item
--	------

Outer Shell Pricing-RNG

RNG-15xx	7.8 osy Omni Vantage™ Ripstop Weave (Golden Brown, Yellow)
RNG-15xx	7.8 osy Omni Vantage™ Ripstop Weave (Black)
RNG-17xx	6.5 osy Armor AP Twill Weave (Golden Brown, Black, Khaki)
RNG-24xx	7.5 osy Brigade® 750 Plain Weave (Natural, Navy, Black, Yellow)
RNG-41xx	7.5 osy Gemini XT™ Plain Weave with Filament Matrix (Bronze)
RNG-41xx	7.5 osy Gemini XT™ Plain Weave with Filament Matrix (Black)
RNG-44xx	7.2 osy Fusion™ Ripstop Weave (Black, Gold)
RNG-47xx	7.0 osy Armor® Comfort-Twill Weave (Golden Brown, Black)
RNG-62xx	7.0 osy Pbi Max™ Comfort-twill Weave (Gold)
RNG-62xx	7.0 osy Pbi Max™ Comfort-twill Weave (Black)
RNG-74xx	6.6 osy Pioneer Twill Weave (Black, Gold, Khaki, Yellow)
RNG-76xx	7.0 osy Aluminized Pbi and Kevlar® Knit (Silver)
RNG-78xx	7.4 osy Z-Flex Aluminized Pbi and Kevlar® 3D Mock-knit (Silver)

Thermal Liner Pricing-RNG

RNG-xx2x	8.0 osy Q-8 (100% Nomex® Facecloth/Nomex Batting)
RNG-xx8x	8.1 osy Glide Gold 3 layer (60% Kevlar Filament, 40% Nomex/FR Rayon Spun Yarn; 3 layers E-89)
RNG-xxAx	7.8 osy Defender® M SL2 (25% Twaron®/10% Nylon Facecloth, Kevlar®/Nomex® Spunlace Batting)
RNG-xxBx	7.4 osy Glide Ice™ 2-layer (60% Kevlar® / 26% Nomex® / 14% Lenzing FR® Facecloth, Kevlar® / N E-89™ Batting)
RNG-xxCx	7.1 osy Synergy II 2-layer (100% Nomex® Facecloth / Kevlar® / Nomex® E-89® Batting)
RNG-xxFx	7.2 osy Chambray Pure (100% Spun 3.2 oz. Nomex ripstop weave facecloth; light 4.0 oz. Kevlar batt virgin)
RNG-xxHx	6.8 osy Glide Ice™ PBI G2 (60% Kevlar®/26% Nomex®/ 14% Lenzing FR® Facecloth, Aramid/PBI B
RNG-xxix	7.1 osy Synergy II 2-layer (100% Nomex® Facecloth / Kevlar® / Nomex® E-89® Batting)
RNG-xxQx	7.7 osy Caldura® SL2i (61% Kevlar® / 34% Lenzing FR® / 5% Nylon Facecloth, Kevlar®/ Nomex® E Batting)
LTO-xxRx	7.0 osy Quantum® 4i (61% Kevlar®/34% Lenzing FR®/ 5% Nylon Facecloth, PBI Batting)
RNG-xxVx	7.6 osy Glide Ice™ (60% Kevlar® / 26% Nomex® / 14% Lenzing FR® Facecloth, 50% Kevlar® / 50% Nomex® Batting)

RNG-xxWx	7.8 osy Defender® M SL2 (25% Twaron®/10% Nylon Facecloth, Kevlar®/Nomex® Spunlace Batting)
RNG-xxZx	7.7 osy Quantum3D® SL2i (61% Kevlar® / 34% Lenzing FR® / 5% Nylon Facecloth, Kevlar® / Nomex® Spunlace Batting)
Moisture Barrier Pricing-RNG ***	
RNG-xxx3	4.7 osy Crosstech® Black (Nomex IIIA® Woven Pajama-check)
RNG-xxx0	4.6 osy Gore® RT7100 (Kevlar®/ Nomex® Needle Punched Non-woven Spunlace)
RNG-xxxG	5.5 osy Stedair® 4000 (Nomex IIIA® Woven Pajama-check)
RNG-xxxD	5.2 osy Stedair® 3000 (Kevlar®/ Nomex® Non-woven Spunlace)
RNG-xxxN	5.2 osy Stedair® Gold (PBI/Nomex IIIA® Woven Pajama-check)

When choosing components, please consult the list of certified composites on the Distributor Portal to ensure your choice is certified. If you do not have access, please contact SalesSupportHFRP@honeywell.com to request access.

IMPORTANT NOTE: Per NFPA 1971, 2018 Edition requirements, Liner Inspection Ports are now required and will automatically be added to all NFPA 1971, 2018 Edition certified composites (pricing is noted below).

Liner Options***

Part No.	Item
LNIP	Inspection Port Liner (added per NFPA 1971, 2018 edition) ***

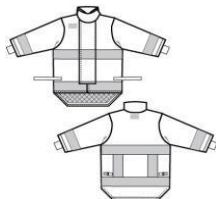
TRIM OPTIONS



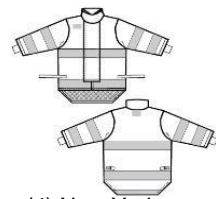
(1) NFPA

		NFPA Trim Placements	
Part No.	Item	Oralite® Ultra Two-Tone (UT)	Oralite® Solid (OS)
TRC201	(1) NFPA 2" (chest/back, sleeves and hem)	X	\$ 165
TRC301	(1) NFPA 3" (chest/back, sleeves and hem)	\$192.40	\$ 198
TRC202	(2) NFPA Hi-viz 2" (chest/back, sleeves and hem)	X	\$ 202
TRC302	(2) NFPA Hi-viz 3" (chest/back, sleeves and hem)	\$210.08	\$ 217
TRC203	(3) NFPA Combo 2" (chest, sleeves, hem and vert. back bands)	X	Call for Quote
TRC303	(3) NFPA Combo 3" (chest, sleeves, hem and vert. back bands)	\$239.20	\$ 280

(2) NFPA Hi-viz

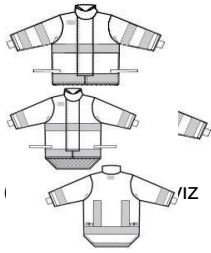


(3) NFPA Combo



(4) New York

		New York Trim Placements	
Part No.	Item	Oralite® Ultra Two-Tone (UT)	Oralite® Solid (OS)
TRC204	(4) New York 2" (chest/back, sleeves, upper arms and hem)	X	\$ 218
TRC304	(4) New York 3" (chest/back, upper arms, sleeves and hem)	\$274.80	\$ 264
TRC205	(5) New York Hi-viz 2" (chest, sleeves, upper arms, hem and vert. back)	X	Call for Quote
TRC305	(5) New York Hi-viz 3" (chest, sleeves, upper arms, hem and vert. back)	\$325.52	\$ 293
TRC206	(6) New York Combo 2" (chest/back, sleeves, upper arm, hem and vert. back)	X	Call for Quote



TRC306	(6) New York Combo 3" (chest/back, sleeves, upper arm, hem and vert. back)	\$327.60	\$ 308
---------------	--	----------	--------

(6) New York Combo



(7) Front view Back view



(8) Front view Back view

Additional Trim Options	
Part No.	Item
TR-SSC2	2" split cuffs ADD
TR-SSC3	3" split cuffs ADD
TR-SSU3	3" split upper arms ADD
TR-DAP01	Dead Air Trim – Full circumferential bands around coat cuffs

Pants Trim Placements			
Part No.	Item	Oralite® Ultra	Oralite
		Two-Tone (UT)	Soli (OS)
TRP207	(7) 2" cuff	X	\$ 53.
TRP307	(7) 3" cuff	\$64.48	\$ 66.
TRP308	(8) 3" cuff and seam Hi-viz	\$115.44	\$ 118
TRP3208	(8) 3" cuff and 2" seam Hi-viz	X	\$ 107
TR-SB	Vertical trim over bellows pockets (when trim over both bellows pockets and both out-seams is desired)	54.04	\$ 54.

TRIM OPTIONS *(continued)*

PART PRICING	Item	Premium Materials*	Standard Materials**	Reflective Lettering L = Lime 3M™ Scotchlite® Oralite® Brilliant O = Orange 3M™ Scotchlite®
	LT-BACK	Back Patches	\$ 45.96	\$ 30.35
	LT-BACKV	With Hook & Loop	\$ 101.96	\$ 74.81
	LT-HEM	Hem Patches	\$ 45.96	\$ 30.35
	LT-HEMV	Hem Patches w/Hook & Loop	\$ 101.96	\$ 74.81

APPLIED LETTERS	Part No.	Item	Colors	Price
	LT-2SL-S	2" 3M™ Scotchlite™ Sewn-on	L/O	\$ 7.77
	LT-3SL-S	3" 3M™ Scotchlite™ Sewn-on	L/O	\$ 7.77
	LT-2SL-R	2" Reflexite Brilliance® Sewn-on	L	\$ 9.53
	LT-3SL-R	3" Reflexite Brilliance® Sewn-on	L	\$ 9.53
	LT-PS	Periods – Sewn (ea)	L/O	\$ 2.69

Flags

Part No.	Item
PO-EUS	U.S. Flag – Nomex® Embroidery
PO-ECAN	Canadian Flag – Nomex® Embroidery

SUSPENDER OPTIONS

Part No.	Item
SP-DF***	Dyna-Fit suspenders
SP-DFS***	Dyna-Fit w/snap attachments
SP-DFQ***	Dyna-Fit w/Quick-adjust
SP-DFSQ***	Dyna-Fit w/snap attachments and Quick-adjust
SP-HBB	H-Back suspenders
SP-HBBS	H-Back w/snap attachments
SP-HBBQ	H-Back w/Quick-adjust
SP-HBBSQ	H-Back w/snap attachments and Quick-adjust

Suspender Options – Add to suspender price

Part No.	Item
SP-TRDF	Two-tone 3M™ Scotchlite™ Dyna-Fit
SP-TR	Two-tone 3M™ Scotchlite™ H-Back
SP-P	Padding
OPSSA	Pant adaptation for snap attach suspenders

*****Suspender** measuring should be done when wearing bunker pants. Measure from between the left front suspender buttons, up an shoulder, then down and across the back to between the right rear suspender buttons. For measurements less than 36" provide the r inch increments. For measurements 36" to 40" order shorts. From 41" to 45" order regulars. From 46" to 50" inches order longs. Ove measurement in one-inch increments.

Note: If no size is specified, regulars will be shipped.

CLOTHING CUSTOM OPTIONS

IMPORTANT RULE FOR ALL OPTIONS: Unless you specify otherwise, options will match the garment shell material color and Nomex® knit will be white.

Belt Options

Part No.	Item
OPBKV	Pants Belt – Kevlar®
OPBL07	Belt Loops (7) - Black Advance

Collar Option

Part No.	Item
CC4RC	4" High Collar

Chinstrap Option

Part No.	Item
CC-RNG	Ranger Comfort Chinstrap

Clip and Hook Options

Part No.	Item	Pre Mat
PK-SLH	Lanyard Flashlight Clip Style #1	
PK-SLHN	Lanyard Flashlight Clip Style #2	
PK-RCPT	Large Hook on a Patch	
PK-RCPTVS	Large Hook on a patch w/velcro strap	
PK-FC	Flashlight Clip	
PK-FCV	Flashlight Clip w/velcro	
PK-SLC	SL-90 Flashlight Clip	

Coat Closure Options

Part No.	Item
CL-NSBZV1	Narrow Shield with Zipper and 1.5" Velcro
CL-NSBZV2	Narrow Shield with Zipper and 2" Velcro

Pant Closure Options

Part No.	Item
CL-NFVR	Reverse hook & D exterior w/1.5" hook & pile (full access opening)
CL-NFV2R	Reverse hook & D exterior w/2" hook & pile interior
CL-FZ	Add zipper to closure (add to closure price)
CL-NFVZR	1" hook & pile exterior with zipper interior, 1 snap, no hook & D

Liner Options

Part No.	Item
LNIPPL	Inspection Port Liner (added per NFPA 1971, 2018 edition)
LNTSY-X9	Thermal Shoulder/Yoke
LNTSYA-X9	Thermal Shoulder/Yoke/Arm

Integral Customization Option

Part No.	Item
PO-IC	Integral Customization – (on Nomex®)

* Premium materials include outer shell models: 37xx, 41xx, 47xx, 62xx, 65xx, 76xx, 78xx, 92xx

** Standard materials include outer shell models: 15xx, 17xx, 24xx, 44xx, 74xx or Kevlar® reinforcement

CLOTHING CUSTOM OPTION**S**

IMPORTANT RULE FOR ALL OPTIONS: Unless you specify otherwise, options will match the garment shell material color, but Nomex® knit will be white.

Pocket, Clip and Hook Options

Part No.	Item	Premium Materials
PKHBLN	Half Height Bellows for Tails 6" x9"x1.5", Neoprene Lined, with Trim Aligned	\$ 194.64
PKBLCHW	Handwarmer Pocket Behind Bellows. Add price to above bellows pocket price +	\$ 65.30
PKBLCHW-FLC	Add Nomex Fleece Behind Bellows. Add price to above bellows pocket price +	\$ 65.30
PKHW	Handwarmer Pockets Moisture Barrier Lined	\$ 97.36
PKHWI	Handwarmer Pockets Moisture Barrier and Thermal Liner for Insulation	\$ 126.47
PKHWEX	External Expandable Handwarmers	\$ 145.62
PKBL	Bellows Pockets – Pants Neoprene Lined, 9"x9"x1½"	\$ 199.84
PKBLX	Large Bellows Pockets Pants, Neoprene Lined. 10"x10"x2" or Larger	\$ 251.94
PKRD	RadioPocket (8"x3"x2" is standard)	\$ 87.82
PKRDDAP	Dual Antenna Port	\$ 3.39
PKRD-FN	Radio Antenna - Single Notch Only (Specify Location)	\$ 6.60
PKRD-FN2	Double Antenna Notch (both left and right)	\$ 22.82

PKMT	Mic Tab	\$ 22.18
PKFP	Flashlight Pockets Specify 2 or 3 Cell	\$ 92.42
PKAMLA	LA Air Mask Pocket (each)	\$ 178.74
PKAMLARD	LA Air Mask/Radio Pocket Combo	\$ 241.64

Other Pocket Refinements

Part No.	Item	Premium Materials
PK-DIV	Divider for pocket	\$ 20.09
PK-SF	Split pocket flap	\$ 23.38

Additional Pocket Reinforcements Full Bellows and Half Height Bellows

Part No.	Item	Premium Materials*
PK-RP53	Replace standard interior lining with 5" exterior/3" interior layer	\$ 82.66
PK-RPF	Substitute outer shell for standard interior lining	\$ 79.68
PK-RFF	Substitute outer shell for standard interior lining, with full sling	\$ 97.61

Additional Pocket Options

Part No.	Item
PK-GF	EZ Grip Pocket Flap
PK-PS	Pencil Slots

Hook & Loop Options on Pockets

Part No.	Item
PK-BL-V1	3 full 1.5" x 3" strip vertically on flap and 1.5" full horizontal on pocket

Reinforcement Options

Part Number	Item	Premium Materials*	Standard Materials
CF-CC	Coat Cuff	\$ 51.99	\$ 41.34
CF-PC	Pant Cuff	\$ 66.75	\$ 54.43
EL-RN	Elbows	\$ 52.64	\$ 41.13
KN-RN	Knees	\$ 88.54	\$ 71.81
KN-RNC	Cushioned Knees	\$ 101.99	\$ 84.72

Only aluminized exterior reinforcements (except 1" at cuffs) may be used on Series 76xx, and 78xx Proximity garments.

* Premium materials include outer shell models: 37xx, 41xx, 47xx, 62xx, 65xx, 76xx, 78xx, 92xx

** Standard materials include outer shell models: 15xx, 17xx, 24xx, 44xx, 74xx or Kevlar® reinforcement

CLOTHING CUSTOM OPTIONS

IMPORTANT RULE FOR ALL OPTIONS: Unless you specify otherwise, options will match the garment shell material color, but Nomex® knit will be white.

Life Grip™ Ladder/Escape Belt System

Part No.	Item	Price	Pr Mi
RS-LADKV	Life Grip™ Ladder/Escape Belt	\$ 210.65	
RS-LADT-L	Ladder Belt/Patriot Tether – 14" (does not include Carabineer)	\$ 71.65	

OPBL07	Belt Loops (7) - Black Advance	\$ 101.23	
RS-LADLOWR	Pant Adaption for Life Grip™ Belt (closes right-over-left)	–	

Class II Spider Harness™ / Patriot Harness (Standard material is Black Advance unless specified otherwise)

Part No.	Item	Pr Mi
RS-HRNSKVR-G	Spider Harness™ with Sliding D-Ring, Harness Keeper and Stow Tabs (closes right-over- left)	\$
RS-HRNSKVR-P	Patriot Harness (closes right-over-left)	\$
RS-HPLOWR	Spider/Patriot Pant Adaptation – Internal Leg Loops (closes right-over-left)	\$
RS-EHPLOWR	Spider/Patriot Pant Adaptation – External Leg Loops (closes right-over-left)	\$

Gemtor Harness Pant Adaptations (Standard material is Black Advance unless specified otherwise)

Part No.	Item	Pr Mi
RS-EHP	External adaptation closes left-over-right (standard style) with standard 3" fly	\$
RS-HRNSP-NY	FDNY style external adaptation closes right-over-left (reverse style). Must add 5" wide fly for true FDNY spec.	\$
CL-WFV1R	5" wide fly with hook and D closure with 1.5" Velcro	
CL-WFV2R	5" wide fly with hook and D closure with 2" Velcro	

Take-Up Strap Options

Part No.	Item	Pr Mi
SA-TUP2	Take-up straps – Set of (2) Postman slide placed above bellows pockets when selected on Tails (Standard on pants)	

Wristlet Options

Part No.	Item	Suffix – N Nomex®	Suffix – K Kevlar®	Su Ke No
WW-TL	Tabbed Long Wristlet	\$ 19.52	\$ 21.61	
WW-TH	Industry Standard Turned Thumbhole Long Wristlet	\$ 23.48	\$ 30.05	
WW-TLH	Hybrid Tabbed Long Wristlet	\$ 19.52	\$ 21.61	

* Premium materials include outer shell models: 37xx, 41xx, 47xx, 62xx, 65xx, 76xx, 78xx, 92xx

** Standard materials include outer shell models: 15xx, 17xx, 24xx, 44xx, 74xx or Kevlar® reinforcement

Ranger Combat Ready Gear is marketed exclusively through:

Honeywell

First Responder Products

#1 Innovation Court • Dayton, OH 45414
(937) 264-2662 • Fax (937) 264-2677 • 1-800-688-6148

Website: www.HoneywellFirstResponder.com

[2019 US Terms and Conditions](#)



ons, NFPA 1851 guidelines or our
SHA regulations. You may clean the

partment.

paper work.



our cutting room may make
) above – 34" sleeve.



, color, size,



	Tail	Pant
	\$936.31	\$578.10
	\$984.72	\$609.14
	\$1,021.05	\$586.25
	\$896.66	\$536.46
	\$1,243.59	\$808.97
	\$1,327.15	\$873.89
	\$985.69	\$607.15
	\$1,263.50	\$801.27
	\$1,256.53	\$820.60
	\$1,340.16	\$885.61
	\$946.33	\$576.61
	\$1,262.50	\$807.99
	\$1,388.45	\$855.04
	\$348.16	\$264.77
	\$592.03	\$485.71
Camo	\$420.18	\$310.15
omex®	\$552.17	\$451.84
	\$473.54	\$382.35
(100%	\$409.51	\$322.21
atting)	\$594.26	\$477.42
	\$473.54	\$382.35
89™	\$530.12	\$434.88
	\$703.56	\$581.58
	\$508.42	\$414.74

Brass	\$420.18	\$310.15
x®	\$573.54	\$475.31
	\$472.84	\$405.26
	\$349.43	\$285.96
	\$439.38	\$346.08
	\$331.18	\$260.35
	\$470.82	\$401.69

to NFPA 1971. If you do not currently

ly be added to all composites (part #

		Price	
		STD	
® Brilliance®		3M™ Scotchlite™	
d	Two-Tone	Solid	Two-Tone
)	(OT)	(S)	(T)
.50	X	\$ 156.30	X
.61	\$ 198.61	\$ 194.55	\$ 207.67
.22	X	\$ 170.33	X
.91	\$ 217.91	\$ 213.51	\$ 227.68
r	X	Call for Quote	X
.14	\$ 280.14	\$ 230.85	\$ 246.32

® Brilliance®		3M™ Scotchlite™	
d	Two-Tone	Solid	Two-Tone
)	(OT)	(S)	(T)
.72	X	\$ 209.55	X
.12	\$ 264.12	\$ 257.18	\$ 274.16
r	X	Call for Quote	X
.90	\$ 293.90	\$ 284.77	\$ 304.67
r	X	Call for Quote	X

.22	\$ 308.22	\$ 291.96	\$ 312.80
-----	-----------	-----------	-----------

	Price
	\$ 10.02
	\$ 10.02
	\$ 10.02
	\$ 22.64

® Brilliance®		3M™ Scotchlite™	
d)	Two-Tone (OT)	Solid (S)	Two-Tone (T)
99	X	\$ 53.50	X
70	\$ 66.70	\$ 65.51	\$ 69.23
.41	\$ 118.41	\$ 116.12	\$ 123.30
.02	\$ 107.02	\$ 105.37	\$ 111.45
04	\$ 54.04	\$ 54.04	\$ 54.04

Colors:

h-lite™ and

nce®

otch-lite™

	Price
	\$ 34.51
	\$ 34.51

	Price
	\$ 72.23
	\$ 83.32
	\$ 78.73
	\$ 89.85
	\$ 69.34
	\$ 79.14
	\$ 75.88
	\$ 86.29

	Price
	\$ 50.56
	\$ 33.46
	\$ 9.83
	\$ 29.69

id over the left
measurement in one-
r 50", provide the



or, leather will be black

	Price
	\$ 77.42
	\$ 101.23

	Price
	\$ 13.45

	Price
	\$ 28.92

mium erials*	Standard Materials**
\$ 56.15	\$ 50.93
\$ 50.56	\$ 43.46
\$ 22.51	\$ 19.72
\$ 69.05	\$ 61.78
\$ 40.38	\$ 35.95
\$ 47.05	\$ 41.32
\$ 39.29	\$ 34.32

	Price
	STD
	\$ 13.99

	Price
	STD
	\$ 5.09
	\$ 30.70
	\$ 31.71

	Price
	STD
	\$ 64.95
	\$ 80.66

	Price
	\$ 46.00

leather will be black and

	Standard Materials**
	\$ 156.51
	\$ 65.30
	\$ 65.30
	\$ 86.74
	\$ 115.84
	\$ 116.85
	\$ 156.98
	\$ 210.51
	\$ 72.36
	\$ 3.39
	\$ 6.60
	\$ 22.82

	\$ 21.13
	\$ 83.50
	\$ 146.87
	\$ 224.13

	Standard Materials**
	\$ 16.93
	\$ 23.38

Standard Materials**	Arashield AR
\$ 56.44	\$ 58.12
\$ 47.30	\$ 68.16
\$ 64.25	\$ 77.29

	Price
	\$ 20.13
	\$ 2.27

	Price
	\$ 5.74

	Leather LR	Arashield AR
	\$ 31.79	\$ 42.38
	STD	\$ 57.36
	\$ 33.02	\$ 41.83
	\$ 48.37	\$ 81.84
	\$ 59.87	\$ 90.42

Leather will be black and

Premium Materials*	Standard Materials**
—	—
—	—

—	—
\$ 192.21	170.08

Premium Materials*	Standard Materials**
\$ 522.63	\$ 522.63
\$ 459.08	\$ 459.08
\$ 304.60	\$ 269.92
\$ 262.40	\$ 230.04

Premium Materials*	Standard Materials**
\$ 182.53	\$ 160.18
\$ 182.53	\$ 160.18
\$ 19.12	\$ 19.12
\$ 23.45	\$ 23.45

Premium Materials*	Standard Materials**
\$ 61.97	\$ 54.31

Suffix – NXK Kevlar®/ Nomex®	Suffix – NBLK Black Nomex®
\$ 21.54	\$ 30.59
\$ 30.59	\$ 34.55
\$ 21.54	\$ 30.59

