

SUGGESTED RETAIL PRICING | EFFECTIVE JANUARY 1, 2024

ALL KAPPLER PRODUCTS

PROVENT®

PVN023

ProVent® Knee-High Shoe/Boot Cover. Elastic at Top and Ankle, Gray Skid Resistant Boot.

Ultrasonic Seams.

Colors: White **Case QTY:** 50 **Case Weight:** 15lbs / 6.8 kg



MSRP/CASE

One Size: **\$159.95**

PVS101

ProVent® Wrap-Around Gown. Hook & Loop Fastener at Neck, Tie Closure at Waist, Knit Cuffs, Non-Sterile.

Serged Seams.

Colors: White **Case QTY:** 30 **Case Weight:** 20lbs / 9.07 kg



MSRP/CASE

SM: **\$196.42**

MD: **\$196.42**

LG: **\$196.42**

XL: **\$196.42**

2XL: **\$216.06**

3XL: **\$225.88**

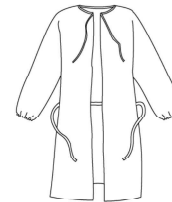
4XL: **\$235.69**

PVS112

ProVent® Wrap-Around Gown. Tie Closure at Neck and Waist, Elastic Wrists, Non-Sterile.

Serged Seams.

Colors: White **Case QTY:** 50 **Case Weight:** 20lbs / 9.07 kg



MSRP/CASE

SM: **\$297.82**

MD: **\$297.82**

LG: **\$297.82**

XL: **\$297.82**

2XL: **\$327.58**

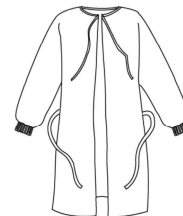
3XL: **\$342.49**

PVS112 2H

ProVent® Wrap-Around Gown. Tie Closure at Neck and Waist, Knit Cuffs, Non-Sterile.

Serged Seams.

Colors: White **Case QTY:** 30 **Case Weight:** 15lbs / 6.8 kg



MSRP/CASE

SM: **\$205.94**

MD: **\$205.94**

LG: **\$205.94**

XL: **\$205.94**

2XL: **\$226.54**

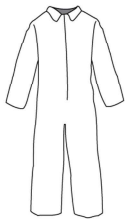
3XL: **\$236.85**

PROVENT® BC

PVS412BC

ProVent® Berry Compliant Coverall. Collar, Front Entry Zipper, No Elastic.
Serged Seams.

Colors: White **Case QTY:** 25 **Case Weight:** 20lbs / 9.07 kg



MSRP/CASE
SM/MD: **\$305.18**
LG/XL: **\$305.18**
2X/3X: **\$335.71**
4XL: **\$350.97**

PVS414BC

ProVent® Berry Compliant Coverall. Attached Hood with Elastic Face Opening,
Front Entry Zipper with LongNeck™ Respirator-Fit Closure, Elastic Wrists, Attached
Skid Resistant Shoe/Boot Covers.
Serged Seams.

Colors: White **Case QTY:** 25 **Case Weight:** 20lbs / 9.07 kg

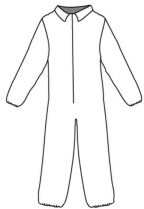


MSRP/CASE
SM/MD: **\$435.48**
LG/XL: **\$435.48**
2X/3X: **\$479.03**
4XL: **\$500.82**

PVS417BC

ProVent® Berry Compliant Coverall. Collar, Front Entry Zipper, Elastic Wrists and
Ankles.
Serged Seams.

Colors: White **Case QTY:** 25 **Case Weight:** 20lbs / 9.07 kg



MSRP/CASE
SM/MD: **\$334.17**
LG/XL: **\$334.17**
2X/3X: **\$367.58**
4XL: **\$384.29**

PVS428BC

ProVent® Berry Compliant Coverall. Attached Hood with Elastic Face Opening,
Front Entry Zipper with LongNeck™ Respirator-Fit Closure, Single Storm Flap with
Adhesive Tape Closure, Elastic at Back Waist, Wrists and Ankles.
Serged Seams.

Colors: White **Case QTY:** 25 **Case Weight:** 20lbs / 9.07 kg



MSRP/CASE
SM/MD: **\$412.72**
LG/XL: **\$412.72**
2X/3X: **\$453.98**
4XL: **\$474.63**

PROVENT® PLUS

PPH424

ProVent® Plus Coverall. Attached Hood with Elastic Face Opening, Front Entry Zipper with LongNeck™ Respirator-Fit Closure, Single Storm Flap with Adhesive Tape Closure, Elastic at Back Waist, Elastic Wrists (with Finger Loops), Attached Skid Resistant Shoe/Boot Covers.

Heat Sealed / Taped Seams.

Colors: Blue **Case QTY:** 6 **Case Weight:** 15lbs / 6.8 kg



MSRP/CASE
SM/MD: **\$340.69**
LG/XL: **\$340.69**
2X/3X: **\$374.75**
4XL: **\$391.78**

PPH425

ProVent® Plus Coverall. Collar, Front Entry Zipper, Single Storm Flap with Adhesive Tape Closure, Elastic at Back Waist, Elastic Ankles and Wrists (with Finger Loops) and Attached Skid Resistant Shoe/Boot Covers.

Heat Sealed / Taped Seams.

Colors: Blue, White **Case QTY:** 6 **Case Weight:** 11lbs / 4.99 kg



MSRP/CASE
SM/MD: **\$293.42**
LG/XL: **\$293.42**
2X/3X: **\$322.75**
4XL: **\$337.43**

PPH428

ProVent® Plus Coverall. Attached Hood with Elastic Face Opening, Front Entry Zipper with LongNeck™ Respirator-Fit Closure, Single Storm Flap with Adhesive Tape Closure, Elastic at Back Waist, Wrists (with Finger Loops) and Ankles.

Heat Sealed / Taped Seams.

Colors: Blue, White **Case QTY:** 6 **Case Weight:** 20lbs / 9.07 kg



MSRP/CASE
SM/MD: **\$226.05**
LG/XL: **\$226.05**
2X/3X: **\$248.66**
4XL: **\$259.95**

PPH433

ProVent Plus Coverall. Collar, Front Entry Zipper, Single Storm Flap with Adhesive Tape Closure, Elastic at Back Waist, Ankles and Wrists (with Finger Loops), Attached Sock Booties.

Heat Sealed / Taped Seams.

Colors: Blue **Case QTY:** 6 **Case Weight:** 15lbs / 6.8 kg



MSRP/CASE
SM/MD: **\$273.43**
LG/XL: **\$273.43**
2X/3X: **\$300.78**
4XL: **\$314.46**

PPH439-99

ProVent® Plus Emergency Medical Garment Coverall. NFPA 1999 Certified. Attached Hood with Elastic Face Opening, Front Entry Zipper with LongNeck™ Respirator-Fit Closure, Double Storm Flaps with Adhesive Tape Closure, Elastic at Wrists (with Finger Loops) and Ankles.

Heat Sealed / Taped Seams.

Colors: Blue, White **Case QTY:** 6 **Case Weight:** 15lbs / 6.8 kg



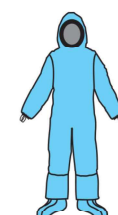
MSRP/CASE
SM/MD: **\$517.25**
LG/XL: **\$517.25**
2X/3X: **\$568.97**
4XL: **\$594.85**

PPH459-99

ProVent® Plus Emergency Medical Garment Coverall. NFPA 1999 Certified. Attached Hood with Sure-Fit® Respirator Face Piece Seal, Rear Entry Zipper, Double Storm Flaps with Hook & Loop Closure, Elastic Wrists with Finger Loops, Attached Sock Booties with Splash Guards.

Heat Sealed / Taped Seams.

Colors: Blue, White **Case QTY:** 6 **Case Weight:** 15lbs / 6.8 kg



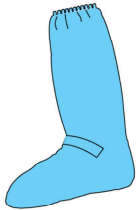
MSRP/CASE
SM/MD: **\$1062.45**
LG/XL: **\$1062.45**
2X/3X: **\$1168.69**
4XL: **\$1221.80**

PPN026

ProVent® Plus Knee-High Shoe/Boot Cover. Hook & Loop Fastener at Ankle, Elastic at Top, 2-Ply Sole.

Ultrasonic Seams.

Colors: Blue Case QTY: 50 Case Weight: 20lbs / 9.07 kg



MSRP/CASE
SM: **\$304.69**
MD: **\$304.69**
LG: **\$304.69**
XL: **\$304.69**

PPN101

ProVent® Plus Wrap-Around Gown. Hook & Loop Fastener at Neck, Tie Closure at Waist, Knit Cuffs, Non-Sterile.

Ultrasonic Seams.

Colors: Blue Case QTY: 30 Case Weight: 20lbs / 9.07 kg



MSRP/CASE
SM: **\$304.69**
MD: **\$304.69**
LG: **\$304.69**
XL: **\$304.69**
2XL: **\$335.15**
3XL: **\$350.38**
4XL: **\$365.62**

DURACHEM® 200

D2H440-9212

DuraChem 200 NFPA 1990 (1992) and NFPA 2112 Certified Coverall. Collar, Front Entry Splash Resistant Coated Zipper, Single Storm Flap with FR Hook & Loop Closure, FR Hook & Loop Fasteners at Wrists & Ankles, Glove Cone Inserts (AG0AR).

Heat Sealed / Taped Seams.

Colors: Hivis Yellow, Navy **Case QTY:** 1 **Case Weight:** 15lbs / 6.8 kg



MSRP/CASE

SM/MD: **\$1075.40**

LG/XL: **\$1075.40**

2X/3X: **\$1182.94**

4XL: **\$1236.69**

D2H440-9212 CP

DuraChem 200 NFPA 1990 (1992) and NFPA 2112 Certified Coverall. Collar, Front Entry Splash Resistant Coated Zipper, Single Storm Flap with FR Hook & Loop Closure, FR Hook & Loop Fasteners at Wrists & Ankles, Glove Cone Inserts (AG0AR) with Attached CP Cuff Option on Jacket Sleeves.

Heat Sealed / Taped Seams.

Colors: Hivis Yellow, Navy **Case QTY:** 1 **Case Weight:** 20lbs / 9.07 kg



MSRP/CASE

SM/MD: **\$1167.34**

LG/XL: **\$1167.34**

2X/3X: **\$1284.08**

4XL: **\$1342.45**

D2H443-9212

DuraChem 200 NFPA 1990 (1992) and NFPA 2112 Certified Coverall. Includes Coverall (D2H440-9212), Attachable Hood (D2H708), Glove Cone Inserts (AG0AR).

Heat Sealed / Taped Seams.

Colors: Hivis Yellow, Navy **Case QTY:** 1 **Case Weight:** 15lbs / 6.8 kg



MSRP/CASE

SM/MD: **\$1138.60**

LG/XL: **\$1138.60**

2X/3X: **\$1252.46**

4XL: **\$1309.40**

D2H443-9212 CP

DuraChem 200 NFPA 1990 (1992) and NFPA 2112 Certified Coverall. Includes Coverall (D2H440-9212), Attachable Hood (D2H708) and Glove Cone Inserts (AG0AR) with Attached CP Cuff Option on Jacket Sleeves.

Heat Sealed / Taped Seams.

Colors: Hivis Yellow, Navy **Case QTY:** 1 **Case Weight:** 20lbs / 9.07 kg



MSRP/CASE

SM/MD: **\$1193.75**

LG/XL: **\$1193.75**

2X/3X: **\$1313.14**

4XL: **\$1372.83**

D2H632-9212

DuraChem 200 NFPA 1990 (1992) and NFPA 2112 Certified Multi-Piece Configuration. Includes Jacket (D2H680), Bib Overall (D2H662), Attachable Hood (D2H708), Glove Cone Inserts (AG0AR).

Heat Sealed / Taped Seams.

Colors: Hivis Yellow, Navy **Case QTY:** 1 **Case Weight:** 8lbs / 3.63 kg



MSRP/CASE

SM/MD: **\$1581.12**

LG/XL: **\$1581.12**

2X/3X: **\$1739.25**

4XL: **\$1818.31**

D2H632-9212 CP

DuraChem 200 NFPA 1990 (1992) and NFPA 2112 Certified Multi-Piece Configuration. Includes Jacket (D2H680), Bib Overall (D2H662), Attachable Hood (D2H708), Glove Cone Inserts (AG0AR) with Attached CP Cuff Option on Jacket Sleeves.

Heat Sealed / Taped Seams.

Colors: Hivis Yellow, Navy **Case QTY:** 1 **Case Weight:** 15lbs / 6.8 kg



MSRP/CASE

SM/MD: **\$1644.38**

LG/XL: **\$1644.38**

2X/3X: **\$1808.82**

4XL: **\$1891.05**

D2H634-9212

DuraChem 200 NFPA 1990 (1992) and NFPA 2112 Certified Multi-Piece Configuration. Includes Jacket (D2H680), Bib Overall (D2H662) and Glove Cone Inserts (AGOAR).

Heat Sealed / Taped Seams.

Colors: Hivis Yellow, Navy **Case QTY:** 1 **Case Weight:** 15lbs / 6.8 kg



MSRP/CASE

SM/MD: **\$1398.48**

LG/XL: **\$1398.48**

2X/3X: **\$1538.34**

4XL: **\$1608.25**

D2H634-9212 CP

DuraChem 200 NFPA 1990 (1992) and NFPA 2112 Certified Multi-Piece Configuration. Includes Jacket (D2H680), Bib Overall (D2H662) and Glove Cone Inserts (AGOAR) with Attached CP Cuff Option on Jacket Sleeves.

Heat Sealed / Taped Seams.

Colors: Hivis Yellow, Navy **Case QTY:** 1 **Case Weight:** 15lbs / 6.8 kg



MSRP/CASE

SM/MD: **\$1457.43**

LG/XL: **\$1457.43**

2X/3X: **\$1603.17**

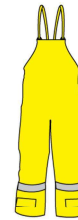
4XL: **\$1676.03**

D2H662

DuraChem 200 Bib Overall with Retroreflective Tape and FR Hook & Loop Fasteners at Ankles.

Heat Sealed / Taped Seams.

Colors: Hivis Yellow, Navy **Case QTY:** 1 **Case Weight:** 10lbs / 4.54 kg



MSRP/CASE

SM/MD: **\$875.17**

LG/XL: **\$875.17**

2X/3X: **\$962.71**

4XL: **\$1006.46**

D2H680

DuraChem 200 Jacket with Collar. Front Entry Zipper, Single Storm Flap with FR Hook & Loop Closure, Retroreflective Tape, FR Hook & Loop Fasteners at Wrists, includes Glove Cone Inserts.

Heat Sealed / Taped Seams.

Colors: Hivis Yellow, Navy **Case QTY:** 1 **Case Weight:** 10lbs / 4.54 kg



MSRP/CASE

SM/MD: **\$798.00**

LG/XL: **\$798.00**

2X/3X: **\$877.80**

4XL: **\$917.71**

D2H680 CP

DuraChem 200 Jacket with Collar. Front Entry Zipper, Single Storm Flap with FR Hook & Loop Closure, Retroreflective Tape, FR Hook & Loop Fasteners at Wrists, includes Glove Cone Inserts with Attached CP Cuff Option on Jacket Sleeves.

Heat Sealed / Taped Seams.

Colors: Hivis Yellow, Navy **Case QTY:** 1 **Case Weight:** 10lbs / 4.54 kg



MSRP/CASE

SM/MD: **\$856.92**

LG/XL: **\$856.92**

2X/3X: **\$942.60**

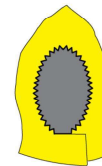
4XL: **\$985.45**

D2H708

DuraChem 200 Attachable Hood. Attachable Hood with FR Hook & Loop Closure.

Heat Sealed / Taped Seams.

Colors: Hivis Yellow, Navy **Case QTY:** 1 **Case Weight:** 3lbs / 1.36 kg



MSRP/CASE

SM/MD: **\$227.54**

LG/XL: **\$227.54**

2X/3X: **\$250.29**

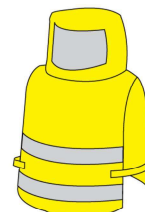
4XL: **\$261.68**

D2H758

DuraChem 200 Overhood. Overhood with 40 mil PVC AntiFog Expanded-View Visor System, Retroreflective Tape and FR Hook & Loop Fasteners on Sides.

Heat Sealed / Taped Seams.

Colors: Hivis Yellow, Navy **Case QTY:** 1 **Case Weight:** 15lbs / 6.8 kg



MSRP/CASE

One Size: **\$603.85**

DURACHEM 200 THERMAL LINER

TFS441

FR Fleece Thermal Liner Coverall. Collar, Front Entry Zipper, Adjustable Wrists and Ankles with FR Hook & Loop Closure.

Serged Seams.

Colors: Dark Gray **Case QTY:** 1 **Case Weight:** 5lbs / 2.27 kg



MSRP/CASE

XS: **\$583.42**

SM/MD: **\$583.42**

LG/XL: **\$583.42**

2X/3X: **\$641.75**

4XL: **\$670.92**

5XL: **\$700.09**

TFS663

FR Fleece Thermal Liner Pants. Elastic Waist and Ankles.

Serged Seams.

Colors: Dark Gray **Case QTY:** 1 **Case Weight:** 5lbs / 2.27 kg



MSRP/CASE

XS: **\$300.49**

SM/MD: **\$300.49**

LG/XL: **\$300.49**

2X/3X: **\$330.54**

4XL: **\$345.55**

5XL: **\$360.58**

TFS681

FR Fleece Thermal Liner Jacket. Collar, Front Entry Zipper, Adjustable Wrists with FR Hook & Loop Closure.

Serged Seams.

Colors: Dark Gray **Case QTY:** 1 **Case Weight:** 5lbs / 2.27 kg



MSRP/CASE

XS: **\$290.42**

SM/MD: **\$290.42**

LG/XL: **\$290.42**

2X/3X: **\$319.45**

4XL: **\$333.97**

5XL: **\$348.49**

DURACHEM® 500

D5H457-94

DuraChem 500 NFPA 1990 (1994) Class 1 & 2 Certified Hazmat/CBRN Ensemble. Coverall with Attached Hood with Sure-Fit® Respirator Face Piece Seal, Front Entry AquaSeal® Gas-Tight Zipper, Double Storm Flaps with FR Hook & Loop Closure, Permanently Attached 25 mil Butyl Gloves with Removable Nomex/Leather Overgloves, Attached Sock Booties with Splash Guards, Hook & Loop Fasteners at Ankles.

Heat Sealed / Taped Seams.

Colors: Khaki, Navy Case QTY: 1 Case Weight: 9lbs / 4.08 kg



MSRP/CASE
SM/MD: \$1709.43
LG/XL: \$1709.43
2X/3X: \$1880.37
4XL: \$1965.85

D5H458-94

DuraChem 500 NFPA 1990 (1994) Class 1 & 2 Certified Vapor Non Encapsulating Suit Coverall with Attached Hood with Sure-Fit® Respirator Face Piece Seal, Rear Entry AquaSeal® Gas-Tight Zipper, Double Storm Flaps with FR Hook & Loop Closure, Permanently Attached 25 mil Butyl Gloves with Removable Nomex/Leather Overgloves, Attached Sock Booties with Splash Guards, Hook & Loop Fasteners at Ankles.

Heat Sealed / Taped Seams.

Colors: Khaki, Navy Case QTY: 1 Case Weight: 9lbs / 4.08 kg



MSRP/CASE
SM/MD: \$1709.43
LG/XL: \$1709.43
2X/3X: \$1880.37
4XL: \$1965.85

D5S457

DuraChem® 500 Training Suit. Coverall with Attached Hood with Sure-Fit® Respirator Face Piece Seal, Front Entry Zipper, Single Storm Flap with Hook & Loop Closure, Permanently Attached PVC Gloves, Attached Sock Booties with Splash Guards, with Hook & Loop Fasteners at Ankles.

Heat Sealed / Taped Seams.

Colors: Khaki, Navy Case QTY: 1 Case Weight: 9lbs / 4.08 kg



MSRP/CASE
SM/MD: \$881.95
LG/XL: \$881.95
2X/3X: \$970.17
4XL: \$1014.25

D5S458

DuraChem® 500 Training Suit. Coverall with Attached Hood with Sure-Fit® Respirator Face Piece Seal, Rear Entry Zipper, Single Storm Flap with Hook & Loop Closure, Permanently Attached PVC Gloves, Attached Sock Booties with Splash Guards, with Hook & Loop Fasteners at Ankles.

Heat Sealed / Taped Seams.

Colors: Khaki, Navy Case QTY: 1 Case Weight: 9lbs / 4.08 kg



MSRP/CASE
SM/MD: \$881.95
LG/XL: \$881.95
2X/3X: \$970.17
4XL: \$1014.25

ZYTRON® 100XP

Z1B414XP

Zytron® 100 XP Coverall. Attached Hood with Elastic Face Opening, Front Entry Zipper with LongNeck™ Respirator-Fit Closure, Single Storm Flap with Adhesive Tape Closure, Elastic Wrists and Attached Shoe/Boot Covers.

Bound Seams.

Colors: Blue Case QTY: 12 Case Weight: 15lbs / 6.8 kg



MSRP/CASE

SM/MD: **\$216.71**

LG/XL: **\$216.71**

2X/3X: **\$238.37**

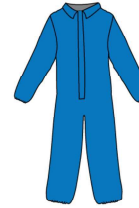
4XL: **\$249.22**

Z1B417XP

Zytron® 100XP Coverall. Collar, Front Entry Zipper, Single Storm Flap with Adhesive Tape Closure, Elastic Wrists and Ankles.

Bound Seams.

Colors: Blue Case QTY: 12 Case Weight: 15lbs / 6.8 kg



MSRP/CASE

SM/MD: **\$173.29**

LG/XL: **\$173.29**

2X/3X: **\$190.63**

4XL: **\$199.29**

Z1B428XP

Zytron® 100XP Coverall. Attached Hood with Elastic Face Opening, Front Entry Zipper with LongNeck™ Respirator-Fit Closure, Single Storm Flap with Adhesive Tape Closure, Elastic Wrists and Ankles.

Bound Seams.

Colors: Blue Case QTY: 12 Case Weight: 20lbs / 9.07 kg



MSRP/CASE

SM/MD: **\$191.83**

LG/XL: **\$191.83**

2X/3X: **\$211.02**

4XL: **\$220.60**

Z1B556XP

Zytron® 100XP Training Suit. Rear Entry Zipper, Double Storm Flaps with Hook & Loop Closure, Large PVC Visor, Expanded Back, Permanently Attached PVC Gloves, Attached Sock Booties with Splash Guards, 1 Exhaust Port.

Bound Seams.

Colors: Blue Case QTY: 6 Case Weight: 20lbs / 9.07 kg



MSRP/CASE

SM/MD: **\$738.74**

LG/XL: **\$738.74**

2X/3X: **\$812.62**

4XL: **\$849.55**

Z1S414XP

Zytron® 100 XP Coverall. Attached Hood with Elastic Face Opening, Front Entry Zipper with LongNeck™ Respirator-Fit Closure, Elastic Wrists, Attached Skid Resistant Shoe/Boot Covers.

Serged Seams.

Colors: Blue Case QTY: 12 Case Weight: 20lbs / 9.07 kg



MSRP/CASE

SM/MD: **\$178.83**

LG/XL: **\$178.83**

2X/3X: **\$196.69**

4XL: **\$205.65**

Z1S428XP

Zytron® 100 XP Coverall. Attached Hood with Elastic Face Opening, Front Entry Zipper with LongNeck™ Respirator-Fit Closure, Elastic Wrists and Ankles.

Serged Seams.

Colors: Blue Case QTY: 12 Case Weight: 15lbs / 6.8 kg



MSRP/CASE

SM/MD: **\$163.75**

LG/XL: **\$163.75**

2X/3X: **\$180.12**

4XL: **\$188.32**

ZYTRON® 200

Z2B414

Zytron® 200 Coverall. Attached Hood with Elastic Face Opening, Front Entry Zipper with LongNeck™ Respirator-Fit Closure, Single Storm Flap with Adhesive Tape Closure, Elastic Wrists and Attached Shoe/Boot Covers.

Bound Seams.

Colors: Gray **Case QTY:** 12 **Case Weight:** 20lbs / 9.07 kg



MSRP/CASE

SM/MD: **\$298.37**

LG/XL: **\$298.37**

2X/3X: **\$328.18**

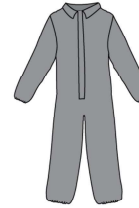
4XL: **\$343.11**

Z2B417

Zytron® 200 Coverall. Collar, Front Entry Zipper, Single Storm Flap with Adhesive Tape Closure, Elastic Wrists and Ankles.

Bound Seams.

Colors: Gray **Case QTY:** 12 **Case Weight:** 15lbs / 6.8 kg



MSRP/CASE

SM/MD: **\$257.48**

LG/XL: **\$257.48**

2X/3X: **\$283.22**

4XL: **\$296.09**

Z2B428

Zytron® 200 Coverall. Attached Hood with Elastic Face Opening, Front Entry Zipper with LongNeck™ Respirator-Fit Closure, Single Storm Flap with Adhesive Tape Closure, Elastic Wrists and Ankles.

Bound Seams.

Colors: Gray **Case QTY:** 12 **Case Weight:** 20lbs / 9.07 kg



MSRP/CASE

SM/MD: **\$257.14**

LG/XL: **\$257.14**

2X/3X: **\$282.86**

4XL: **\$295.71**

Z2B571

Zytron® 200 Splash Total Encapsulating Suit. Rear Entry Zipper, Single Storm Flap with Adhesive Tape Closure, Large 20 mil PVC Visor, Expanded Back, Elastic Wrists, Attached Sock Booties with Splash Guards, 1 Exhaust Port.

Bound Seams.

Colors: Gray **Case QTY:** 6 **Case Weight:** 20lbs / 9.07 kg



MSRP/CASE

SM/MD: **\$395.05**

LG/XL: **\$395.05**

2X/3X: **\$434.55**

4XL: **\$454.31**

Z2B847

Zytron® 200 Long Sleeved Apron. Tie Closure at Back, Elastic Wrists.

Bound Seams.

Colors: Gray **Case QTY:** 25 **Case Weight:** 20lbs / 9.07 kg



MSRP/CASE

SM/MD: **\$323.48**

LG/XL: **\$323.48**

2X/3X: **\$355.83**

4XL: **\$372.02**

Z2H051

Zytron 200 sleeve. Elastic at Both Ends.

Heat Sealed / Taped Seams.

Colors: Gray **Case QTY:** 50 **Case Weight:** 10lbs / 4.54 kg



MSRP/CASE

One Size: **\$266.14**

Z2H371

Zytron® 200 Splash Total Encapsulating Suit. Rear Entry Zipper, Flat Back, Double Storm Flaps with Hook & Loop Closure, Large 20 mil PVC Visor, Elastic Wrists, Attached Sock Booties with Splash Guards and 1 Exhaust Port.

Heat Sealed / Taped Seams.

Colors: Gray **Case QTY:** 6 **Case Weight:** 20lbs / 9.07 kg



MSRP/CASE

SM/MD: **\$688.23**

LG/XL: **\$688.23**

2X/3X: **\$757.05**

4XL: **\$791.48**

Z2H412

Zytron® 200 Coverall. Collar, Front Entry Zipper, Double Storm Flaps with Hook & Loop Closure.

Heat Sealed / Taped Seams.

Colors: Gray **Case QTY:** 6 **Case Weight:** 15lbs / 6.8 kg



MSRP/CASE

SM/MD: **\$248.37**

LG/XL: **\$248.37**

2X/3X: **\$273.22**

4XL: **\$285.63**

Z2H414

Zytron® 200 Coverall. Attached Hood with Elastic Face Opening, Front Entry Zipper with LongNeck™ Respirator-Fit Closure, Double Storm Flaps with Hook & Loop Closure, Elastic Wrists, Attached Shoe/Boot Covers.

Heat Sealed / Taped Seams.

Colors: Gray **Case QTY:** 6 **Case Weight:** 20lbs / 9.07 kg



MSRP/CASE

SM/MD: **\$341.62**

LG/XL: **\$341.62**

2X/3X: **\$375.78**

4XL: **\$392.86**

Z2H417

Zytron® 200 Coverall. Collar, Front Entry Zipper, Double Storm Flaps with Hook & Loop Closure, Elastic Wrists and Ankles.

Heat Sealed / Taped Seams.

Colors: Gray **Case QTY:** 6 **Case Weight:** 15lbs / 6.8 kg



MSRP/CASE

SM/MD: **\$265.83**

LG/XL: **\$265.83**

2X/3X: **\$292.43**

4XL: **\$305.72**

Z2H426

Zytron® 200 Coverall. Attached Hood with Elastic Face Opening, Front Entry Zipper with LongNeck™ Respirator-Fit Closure, Double Storm Flaps with Hook & Loop Closure, Elastic Wrists, Attached Sock Booties with Splash Guards.

Heat Sealed / Taped Seams.

Colors: Gray **Case QTY:** 6 **Case Weight:** 20lbs / 9.07 kg



MSRP/CASE

SM/MD: **\$393.82**

LG/XL: **\$393.82**

2X/3X: **\$433.18**

4XL: **\$452.88**

Z2H428

Zytron® 200 Coverall. Attached Hood with Elastic Face Opening, Front Entry Zipper with LongNeck™ Respirator-Fit Closure, Double Storm Flaps with Hook & Loop Closure, Elastic Wrists and Ankles.

Heat Sealed / Taped Seams.

Colors: Gray **Case QTY:** 6 **Case Weight:** 15lbs / 6.8 kg



MSRP/CASE

SM/MD: **\$265.54**

LG/XL: **\$265.54**

2X/3X: **\$292.09**

4XL: **\$305.35**

Z2H571

Zytron® 200 Splash Total Encapsulating Suit. Rear Entry Zipper, Double Storm Flaps with Hook & Loop Closure, Large 20 mil PVC Visor, Expanded Back, Elastic Wrists, Attached Sock Booties with Splash Guards, 1 Exhaust Port.

Heat Sealed / Taped Seams.

Colors: Gray **Case QTY:** 6 **Case Weight:** 25lbs / 11.34 kg



MSRP/CASE

SM/MD: **\$710.68**

LG/XL: **\$710.68**

2X/3X: **\$781.75**

4XL: **\$817.28**

ZYTRON® 300

Z3H412

Zytron® 300 Coverall. Collar, Front Entry Zipper, Double Storm Flaps with Hook & Loop Closure.

Heat Sealed / Taped Seams.

Colors: Tan **Case QTY:** 6 **Case Weight:** 20lbs / 9.07 kg



MSRP/CASE

SM/MD: **\$351.11**

LG/XL: **\$351.11**

2X/3X: **\$386.20**

4XL: **\$403.74**

Z3H414

Zytron® 300 Coverall. Attached Hood with Elastic Face Opening, Front Entry Zipper with LongNeck™ Respirator-Fit Closure, Double Storm Flaps with Hook & Loop Closure, Elastic Wrists, Attached Shoe/Boot Covers.

Heat Sealed / Taped Seams.

Colors: Tan **Case QTY:** 6 **Case Weight:** 20lbs / 9.07 kg



MSRP/CASE

SM/MD: **\$475.72**

LG/XL: **\$475.72**

2X/3X: **\$523.28**

4XL: **\$547.08**

Z3H417

Zytron® 300 Coverall. Collar, Front Entry Zipper, Double Storm Flaps with Hook & Loop Closure, Elastic Wrists and Ankles.

Heat Sealed / Taped Seams.

Colors: Tan **Case QTY:** 6 **Case Weight:** 20lbs / 9.07 kg



MSRP/CASE

SM/MD: **\$372.11**

LG/XL: **\$372.11**

2X/3X: **\$409.32**

4XL: **\$427.92**

Z3H426

Zytron® 300 Coverall. Attached Hood with Elastic Face Opening, Front Entry Zipper with LongNeck™ Respirator-Fit Closure, Double Storm Flaps with Hook & Loop Closure, Elastic Wrists, Attached Sock Booties with Splash Guards.

Heat Sealed / Taped Seams.

Colors: Tan **Case QTY:** 6 **Case Weight:** 20lbs / 9.07 kg



MSRP/CASE

SM/MD: **\$536.00**

LG/XL: **\$536.00**

2X/3X: **\$589.60**

4XL: **\$616.42**

Z3H426-92

Zytron 300 1990 (1992) Certified Coverall. Attached Hood with Elastic Face Opening, Front Entry Splash Resistant Coated Zipper with LongNeck™ Respirator-Fit Closure, Double Storm Flaps with Hook & Loop Closure, Elastic Wrists, Attached Sock Booties with Splash Guards.

Heat Sealed / Taped Seams.

Colors: Tan **Case QTY:** 6 **Case Weight:** 20lbs / 9.07 kg



MSRP/CASE

SM/MD: **\$833.38**

LG/XL: **\$833.38**

2X/3X: **\$916.72**

4XL: **\$958.37**

Z3H427-92

Zytron® 300 NFPA 1990 (1992) Certified Splash Protective Coverall. Attached Hood with Elastic Face Opening, Front Entry Diagonal Splash Resistant Coated Zipper, Double Storm Flaps with Hook & Loop Closure, Attached 2N1® Glove System, Attached Sock Booties with Splash Guards.

Heat Sealed / Taped Seams.

Colors: Tan **Case QTY:** 6 **Case Weight:** 25lbs / 11.34 kg



MSRP/CASE

SM/MD: **\$1370.78**

LG/XL: **\$1370.78**

2X/3X: **\$1507.86**

4XL: **\$1576.40**

Z3H428

Zytron® 300 Coverall. Attached Hood with Elastic Face Opening, Front Entry Zipper with LongNeck™ Respirator-Fit Closure, Double Storm Flaps with Hook & Loop Closure, Elastic Wrists and Ankles.

Heat Sealed / Taped Seams.

Colors: Tan **Case QTY:** 6 **Case Weight:** 20lbs / 9.07 kg



MSRP/CASE

SM/MD: **\$378.09**

LG/XL: **\$378.09**

2X/3X: **\$415.92**

4XL: **\$434.80**

Z3H428-92

Zytron® 300 NFPA 1990 (1992) Certified Splash Protective Coverall. Attached Hood with Elastic Face Opening, Front Entry Splash Resistant Coated Zipper with LongNeck™ Respirator-Fit Closure, Double Storm Flaps with Hook & Loop Closure and Elastic Wrists.

Heat Sealed / Taped Seams.

Colors: Tan **Case QTY:** 6 **Case Weight:** 20lbs / 9.07 kg



MSRP/CASE

SM/MD: **\$732.91**

LG/XL: **\$732.91**

2X/3X: **\$806.20**

4XL: **\$842.85**

Z3H437-92

Zytron® 300 NFPA 1990 (1992) Certified Splash Protective Coverall. Attached Hood with Elastic Face Opening, Front Entry Diagonal Splash Resistant Coated Zipper, Double Storm Flaps with Hook & Loop Closure, Attached Neoprene Gloves, Attached Sock Booties with Splash Guards.

Heat Sealed / Taped Seams.

Colors: Tan **Case QTY:** 6 **Case Weight:** 25lbs / 11.34 kg



MSRP/CASE

SM/MD: **\$1129.63**

LG/XL: **\$1129.63**

2X/3X: **\$1242.58**

4XL: **\$1299.08**

Z3H448

Zytron® 300 Wade/Rescue Suit. Adjustable Mustang® Survival Neck Ring, Front Entry with Diagonal Urethane Coated Zipper with T-Handle Pull Cord, Latex Seals at Wrists, Attached Sock Booties.

Heat Sealed / Taped Seams.

Colors: Tan **Case QTY:** 6 **Case Weight:** 25lbs / 11.34 kg



MSRP/CASE

SM/MD: **\$5664.37**

LG/XL: **\$5664.37**

2X/3X: **\$6230.80**

4XL: **\$6514.02**

Z3H452-92

Zytron® 300 NFPA 1990 (1992) Certified Splash Protective Coverall. Attached Hood with Sure-Fit® Respirator Face Piece Seal, Front Entry Diagonal Splash Resistant Coated Zipper, Double Storm Flaps with Hook & Loop Closure, Permanently Attached 2N1® Glove System and Attached Sock Booties with Splash Guards.

Heat Sealed / Taped Seams.

Colors: Tan **Case QTY:** 6 **Case Weight:** 25lbs / 11.34 kg



MSRP/CASE

SM/MD: **\$1472.25**

LG/XL: **\$1472.25**

2X/3X: **\$1619.48**

4XL: **\$1693.09**

Z3H456-92

Zytron® 300 NFPA 1990 (1992) Certified Splash Protective Coverall. Attached Hood with Sure-Fit® Respirator Face Piece Seal, Rear Entry Splash Resistant Coated Zipper with Double Storm Flaps with Hook & Loop Closure, Permanently Attached 2N1® Glove System and Attached Sock Booties with Splash Guards.

Heat Sealed / Taped Seams.

Colors: Tan **Case QTY:** 6 **Case Weight:** 25lbs / 11.34 kg



MSRP/CASE

SM/MD: **\$1472.25**

LG/XL: **\$1472.25**

2X/3X: **\$1619.48**

4XL: **\$1693.09**

Z3H571

Zytron® 300 Splash Protective Total Encapsulating Suit. Rear Entry Zipper, Double Storm Flaps with Hook & Loop Closure, Large 20 mil PVC Visor, Expanded Back, Elastic Wrists, Attached Sock Booties with Splash Guards, 1 Exhaust Port.

Heat Sealed / Taped Seams.

Colors: Tan **Case QTY:** 6 **Case Weight:** 25lbs / 11.34 kg



MSRP/CASE

SM/MD: **\$1010.78**

LG/XL: **\$1010.78**

2X/3X: **\$1111.86**

4XL: **\$1162.42**

Z3H576-92

Zytron® 300 NFPA 1990 (1992) Splash Protective Total Encapsulating Suit. Rear Entry Zipper, Double Storm Flaps with Hook & Loop Closure, Expanded View AntiFog Visor System, Expanded Back, Permanently Attached Neoprene Gloves, Attached Sock Booties with Splash Guards, 2 Exhaust Valves.

Heat Sealed / Taped Seams.

Colors: Tan **Case QTY:** 6 **Case Weight:** 25lbs / 11.34 kg



MSRP/CASE

SM/MD: **\$2047.40**

LG/XL: **\$2047.40**

2X/3X: **\$2252.14**

4XL: **\$2354.52**

Z3H577-92

Zytron® 300 NFPA 1990 (1992) Certified Splash Protective Total Encapsulating Suit. Front Entry Zipper, Double Storm Flaps with Hook & Loop Closure, Expanded View AntiFog Visor System, Expanded Back, Permanently Attached Neoprene Gloves, Attached Sock Booties with Splash Guards, 2 Exhaust Valves.

Heat Sealed / Taped Seams.

Colors: Tan **Case QTY:** 6 **Case Weight:** 25lbs / 11.34 kg



MSRP/CASE

SM/MD: **\$2047.40**

LG/XL: **\$2047.40**

2X/3X: **\$2252.14**

4XL: **\$2354.52**

Z3H660

Zytron® 300 Bib Trousers. Adjustable Webbing Straps and Snap-Lock Fasteners.

Heat Sealed / Taped Seams.

Colors: Tan **Case QTY:** 6 **Case Weight:** 10lbs / 4.54 kg



MSRP/CASE

SM/MD: **\$247.55**

LG/XL: **\$247.55**

2X/3X: **\$272.31**

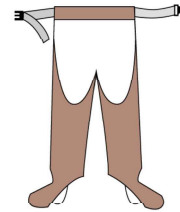
4XL: **\$284.69**

Z3H661

Zytron® 300 Chaps. Adjustable Waist Belt, Hook & Loop Fasteners, Reinforced Knees.

Heat Sealed / Taped Seams.

Colors: Tan **Case QTY:** 6 **Case Weight:** 10lbs / 4.54 kg



MSRP/CASE

LG/XL: **\$325.05**

2X/3X: **\$357.55**

Z3H670

Zytron® 300 Jacket. Front Entry Zipper, Double Storm Flaps with Hook & Loop Closure, Elastic Wrists.

Heat Sealed / Taped Seams.

Colors: Tan **Case QTY:** 6 **Case Weight:** 20lbs / 9.07 kg



MSRP/CASE

SM/MD: **\$294.88**

LG/XL: **\$294.88**

2X/3X: **\$324.37**

4XL: **\$339.12**

Z3H670 CP

Zytron® 300 Jacket. Zipper Front, Double Storm Flaps with Hook & Loop Closure, CP Cuff Option.

Heat Sealed / Taped Seams.

Colors: Tan **Case QTY:** 6 **Case Weight:** 20lbs / 9.07 kg



MSRP/CASE

SM/MD: **\$379.32**

LG/XL: **\$379.32**

2X/3X: **\$417.25**

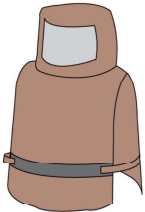
4XL: **\$436.22**

Z3H750

Zytron® 300 Hood. Overhood, PVC Visor, Flat Back, Waist Length, Hook & Loop Fasteners on Sides.

Heat Sealed / Taped Seams.

Colors: Tan Case QTY: 6 Case Weight: 20lbs / 9.07 kg



MSRP/CASE
One Size: **\$343.54**

Z3H763

Zytron® 300 Half C Jacket. Attached Hood with 20 mil PVC Visor, Double Storm Flaps with Hook & Loop Closure and CP Cuff Option.

Heat Sealed / Taped Seams.

Colors: Tan Case QTY: 6 Case Weight: 20lbs / 9.07 kg



MSRP/CASE
SM/MD: **\$547.34**
LG/XL: **\$547.34**
2X/3X: **\$602.09**
4XL: **\$629.48**

Z3H763 30

Zytron 300 Half C Jacket with Air System. Attached Hood with 20 mil PVC Visor, Double Storm Flaps with Hook & Loop Closure and CP Cuff Option.

Heat Sealed / Taped Seams.

Colors: Tan Case QTY: 6 Case Weight: 20lbs / 9.07 kg



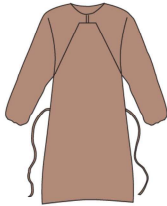
MSRP/CASE
SM/MD: **\$1789.60**
LG/XL: **\$1789.60**
2X/3X: **\$1968.55**
4XL: **\$2058.05**

Z3H847

Zytron® 300 Long Sleeved Apron. Hook & Loop Fastener at Neck, Tie Closure at Waist, Elastic Wrists.

Heat Sealed / Taped Seams.

Colors: Tan Case QTY: 12 Case Weight: 20lbs / 9.07 kg



MSRP/CASE
SM/MD: **\$372.40**
LG/XL: **\$372.40**
2X/3X: **\$409.66**
4XL: **\$428.28**

ZYTRON® 300 FR

Z3H426 FR

Zytron® 300 FR Coverall. Attached Hood with Elastic Face Opening, Front Entry Zipper with LongNeck™ Respirator-Fit Closure, Double Storm Flaps with Hook & Loop Closure, Elastic Wrists, Attached Sock Booties with Splash Guards.

Heat Sealed / Taped Seams.

Colors: White Case QTY: 6 Case Weight: 20lbs / 9.07 kg



MSRP/CASE
SM/MD: **\$840.95**
LG/XL: **\$840.95**
2X/3X: **\$925.05**
4XL: **\$967.09**

Z3H428 FR

Zytron® 300 FR Coverall. Attached Hood with Elastic Face Opening, Front Entry Zipper with LongNeck™ Respirator-Fit Closure, Double Storm Flaps with Hook & Loop Closure, Elastic Wrists and Ankles.

Heat Sealed / Taped Seams.

Colors: White Case QTY: 6 Case Weight: 20lbs / 9.07 kg



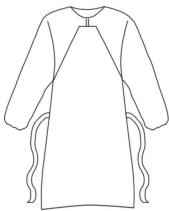
MSRP/CASE
SM/MD: **\$644.12**
LG/XL: **\$644.12**
2X/3X: **\$708.54**
4XL: **\$740.74**

Z3H847 FR

Zytron® 300 FR Long Sleeved Apron. Hook & Loop Neck Fastener, Back Closure with FR Webbing and Buckle, Elastic Wrists.

Heat Sealed / Taped Seams.

Colors: White Case QTY: 12 Case Weight: 20lbs / 9.07 kg



MSRP/CASE
SM/MD: **\$551.66**
LG/XL: **\$551.66**
2X/3X: **\$606.83**
4XL: **\$634.42**

ZYTRON® 400

Z4H414

Zytron® 400 Coverall. Attached Hood with Elastic Face Opening, Front Entry Zipper with LongNeck™ Respirator-Fit Closure, Double Storm Flaps with Hook & Loop Closure, Elastic Wrists, Attached Shoe/Boot Covers.

Heat Sealed / Taped Seams.

Colors: Green **Case QTY:** 6 **Case Weight:** 20lbs / 9.07 kg



MSRP/CASE

SM/MD: **\$640.88**

LG/XL: **\$640.88**

2X/3X: **\$704.97**

4XL: **\$737.02**

Z4H417

Zytron® 400 Coverall. Collar, Front Entry Zipper, Double Storm Flaps with Hook & Loop Closure, Elastic Wrists and Ankles.

Heat Sealed / Taped Seams.

Colors: Green **Case QTY:** 6 **Case Weight:** 20lbs / 9.07 kg



MSRP/CASE

SM/MD: **\$515.66**

LG/XL: **\$515.66**

2X/3X: **\$567.22**

4XL: **\$593.02**

Z4H426

Zytron® 400 Coverall. Attached Hood with Elastic Face Opening, Front Entry Zipper with LongNeck™ Respirator-Fit Closure, Double Storm Flaps with Hook & Loop Closure, Elastic Wrists, Attached Sock Booties with Splash Guards.

Heat Sealed / Taped Seams.

Colors: Green **Case QTY:** 6 **Case Weight:** 20lbs / 9.07 kg



MSRP/CASE

SM/MD: **\$722.71**

LG/XL: **\$722.71**

2X/3X: **\$794.97**

4XL: **\$831.11**

Z4H428

Zytron® 400 Coverall. Attached Hood with Elastic Face Opening, Front Entry Zipper with LongNeck™ Respirator-Fit Closure, Double Storm Flaps with Hook & Loop Closure, Elastic Wrists and Ankles.

Heat Sealed / Taped Seams.

Colors: Green **Case QTY:** 6 **Case Weight:** 20lbs / 9.07 kg



MSRP/CASE

SM/MD: **\$523.08**

LG/XL: **\$523.08**

2X/3X: **\$575.38**

4XL: **\$601.55**

Z4H428 CP

Zytron 400 Coverall with CP Cuff Option. Attached Hood with Elastic Face Opening, Front Entry Zipper with LongNeck™ Respirator-Fit Closure, Double Storm Flaps with Hook & Loop Closure, Elastic Ankles.

Heat Sealed / Taped Seams.

Colors: Green **Case QTY:** 6 **Case Weight:** 20lbs / 9.07 kg



MSRP/CASE

SM/MD: **\$587.68**

LG/XL: **\$587.68**

2X/3X: **\$646.45**

4XL: **\$675.85**

Z4H571

Zytron® 400 Splash Total Encapsulating Suit. Rear Entry Zipper, Double Storm Flaps with Hook & Loop Closure, Large PVC Visor, Expanded Back, Elastic Wrists, Attached Sock Booties with Splash Guards, 1 Exhaust Port. NOTE: Z4H571 is packed 3 PER CASE, whereas most garments of this type are packed 6 per case.

Heat Sealed / Taped Seams.

Colors: Green **Case QTY:** 3 **Case Weight:** 25lbs / 11.34 kg



MSRP/CASE

SM/MD: **\$636.40**

LG/XL: **\$636.40**

2X/3X: **\$700.02**

4XL: **\$731.83**

Z4H660

Zytron® 400 Bib Trousers. Adjustable Webbing Straps and Snap-Lock Fasteners.

Heat Sealed / Taped Seams.

Colors: Green **Case QTY:** 6 **Case Weight:** 10lbs / 4.54 kg



MSRP/CASE

SM/MD: **\$416.25**

LG/XL: **\$416.25**

2X/3X: **\$457.86**

4XL: **\$478.69**

Z4H670 CP

Zytron® 400 Jacket. Zipper Front, Double Storm Flaps with Hook & Loop Closure, CP Cuff Option.

Heat Sealed / Taped Seams.

Colors: Green **Case QTY:** 6 **Case Weight:** 20lbs / 9.07 kg



MSRP/CASE
SM/MD: **\$430.18**
LG/XL: **\$430.18**
2X/3X: **\$473.20**
4XL: **\$494.72**

Z4H750

Zytron® 400 Hood. Overhood, PVC Visor, Flat Back, Waist Length, Hook & Loop Fasteners on Sides.

Heat Sealed / Taped Seams.

Colors: Green **Case QTY:** 6 **Case Weight:** 20lbs / 9.07 kg



MSRP/CASE
One Size: **\$417.45**

ZYTRON® 500

Z5H352

Zytron® 500 Vapor Total Encapsulating Suit. Must Specify Pass-Thru Option. Pricing includes Standard Pass-Thru 7H. Front Entry AquaSeal® Gas-Tight Zipper, Double Storm Flaps with Hook & Loop Closure, Expanded View AntiFog Visor System, Flat Back, Attached Field Replaceable Butyl Gloves, Attached Sock Booties with Splash Guards and 2 Exhaust Valves.

Heat Sealed / Taped Seams.

Colors: Orange **Case QTY:** 1 **Case Weight:** 20lbs / 9.07 kg



MSRP/CASE

SM/MD: **\$1160.03**

LG/XL: **\$1160.03**

2X/3X: **\$1276.02**

4XL: **\$1334.03**

Z5H353

Zytron® 500 Vapor Total Encapsulating Suit. Must Specify Pass-Thru Option. Pricing includes Standard Pass-Thru 7H. Rear Entry AquaSeal® Gas-Tight Zipper, Double Storm Flaps with Hook & Loop Closure, Expanded View AntiFog Visor System, Flat Back, Attached Field Replaceable Butyl Gloves, Attached Sock Booties with Splash Guards and 2 Exhaust Valves.

Heat Sealed / Taped Seams.

Colors: Orange **Case QTY:** 1 **Case Weight:** 20lbs / 9.07 kg



MSRP/CASE

SM/MD: **\$1160.03**

LG/XL: **\$1160.03**

2X/3X: **\$1276.02**

4XL: **\$1334.03**

Z5H382

Zytron® 500 Vapor Total Encapsulating Suit. (HazMat Model). Must Specify Pass-Thru Option. Pricing includes standard pass through 7H. Front Entry Diagonal AquaSeal® Gas-Tight Zipper, Double Storm Flaps with Hook & Loop Closure, Expanded View AntiFog Visor System with Additional FEP Overlay, Flat Back, Attached Field Replaceable 2N1® Glove System, Attached Sock Booties with Splash Guards, Knee Reinforcements and 2 Exhaust Valves.

Heat Sealed / Taped Seams.

Colors: Charcoal, Orange **Case QTY:** 1 **Case Weight:** 20lbs / 9.07 kg



MSRP/CASE

SM/MD: **\$1328.87**

LG/XL: **\$1328.87**

2X/3X: **\$1461.73**

4XL: **\$1528.19**

Z5H383

Zytron® 500 Vapor Total Encapsulating Suit. (HazMat Model) . Must Specify Pass-Thru Option. Pricing Includes Standard Pass Through 7H. Rear Entry AquaSeal® Gas-Tight Zipper, Double Storm Flaps with Hook & Loop Closure, Expanded View AntiFog Visor System with Additional FEP Overlay, Flat Back, Attached Field Replaceable 2N1® Glove System, Attached Sock Booties with Splash Guards, Knee Reinforcements and 2 Exhaust Valves.

Heat Sealed / Taped Seams.

Colors: Orange **Case QTY:** 1 **Case Weight:** 20lbs / 9.07 kg



MSRP/CASE

SM/MD: **\$1328.87**

LG/XL: **\$1328.87**

2X/3X: **\$1461.73**

4XL: **\$1528.19**

Z5H426

Zytron® 500 Coverall. Attached Hood with Elastic Face Opening, Front Entry Zipper with LongNeck™ Respirator-Fit Closure, Double Storm Flaps with Hook & Loop Closure, Elastic Wrists, Attached Sock Booties with Splash Guards.

Heat Sealed / Taped Seams.

Colors: Charcoal, Orange **Case QTY:** 3 **Case Weight:** 20lbs / 9.07 kg



MSRP/CASE

SM/MD: **\$627.35**

LG/XL: **\$627.35**

2X/3X: **\$690.11**

4XL: **\$721.48**

Z5H428

Zytron® 500 Coverall. Attached Hood with Elastic Face Opening, Front Entry Zipper with LongNeck™ Respirator-Fit Closure, Double Storm Flaps with Hook & Loop Closure, Elastic Wrists and Ankles.

Heat Sealed / Taped Seams.

Colors: Orange **Case QTY:** 3 **Case Weight:** 20lbs / 9.07 kg



MSRP/CASE

SM/MD: **\$474.72**

LG/XL: **\$474.72**

2X/3X: **\$522.18**

4XL: **\$545.92**

Z5H552

Zytron® 500 Vapor Total Encapsulating Suit. Front Entry AquaSeal® Gas-Tight Zipper, Double Storm Flaps with Hook & Loop Closure, Expanded View AntiFog Visor System, Expanded Back, Attached Field Replaceable Butyl Gloves, Attached Sock Booties with Splash Guards, 2 Exhaust Valves.

Heat Sealed / Taped Seams.

Colors: Charcoal, Orange **Case QTY:** 1 **Case Weight:** 20lbs / 9.07 kg



MSRP/CASE

SM/MD: **\$1127.20**

LG/XL: **\$1127.20**

2X/3X: **\$1239.92**

4XL: **\$1296.27**

Z5H553

Zytron® 500 Vapor Total Encapsulating Suit. Rear Entry AquaSeal® Gas-Tight Zipper, Double Storm Flaps with Hook & Loop Closure, Expanded View AntiFog Visor System, Expanded Back, Attached Field Replaceable Butyl Gloves, Attached Sock Booties with Splash Guards and 2 Exhaust Valves.

Heat Sealed / Taped Seams.

Colors: Charcoal, Orange **Case QTY:** 1 **Case Weight:** 20lbs / 9.07 kg



MSRP/CASE

SM/MD: **\$1127.20**

LG/XL: **\$1127.20**

2X/3X: **\$1239.92**

4XL: **\$1296.27**

Z5H572

Zytron® 500 Splash Total Encapsulating Suit. Front Entry Zipper, Double Storm Flaps with Hook & Loop Closure, Expanded View AntiFog Visor System, Expanded Back, Elastic Wrists, Attached Sock Booties with Splash Guards, 1 Exhaust Port.

Heat Sealed / Taped Seams.

Colors: Charcoal, Orange **Case QTY:** 1 **Case Weight:** 20lbs / 9.07 kg



MSRP/CASE

SM/MD: **\$417.23**

LG/XL: **\$417.23**

2X/3X: **\$458.94**

4XL: **\$479.80**

Z5H573

Zytron® 500 Splash Total Encapsulating Suit. Rear Entry Zipper, Double Storm Flaps with Hook & Loop Closure, Expanded View AntiFog Visor System, Expanded Back, Elastic Wrists, Attached Sock Booties with Splash Guards and 1 Exhaust Port.

Heat Sealed / Taped Seams.

Colors: Orange **Case QTY:** 1 **Case Weight:** 20lbs / 9.07 kg



MSRP/CASE

SM/MD: **\$417.23**

LG/XL: **\$417.23**

2X/3X: **\$458.94**

4XL: **\$479.80**

Z5H577-92

Zytron® 500 NFPA 1990 (1992) Certified Splash Protective Total Encapsulating Suit. Front Entry Zipper, Double Storm Flaps with Hook & Loop Closure, Expanded View AntiFog Visor System, Expanded Back, Permanently Attached Neoprene Gloves, Attached Sock Booties with Splash Guards, 2 Exhaust Valves.

Heat Sealed / Taped Seams.

Colors: Charcoal, Orange **Case QTY:** 1 **Case Weight:** 20lbs / 9.07 kg



MSRP/CASE

SM/MD: **\$610.05**

LG/XL: **\$610.05**

2X/3X: **\$671.06**

4XL: **\$701.55**

Z5H582

Zytron® 500 Vapor Total Encapsulating Suit. (HazMat Model) Front Entry AquaSeal® Gas-Tight Zipper, Double Storm Flaps with Hook & Loop Closure, Expanded View AntiFog Visor System with Additional FEP Overlay, Expanded Back, , Attached Field Replaceable 2N1® Glove System, Attached Sock Booties with Splash Guards, Knee Reinforcements, 2 Exhaust Valves.

Heat Sealed / Taped Seams.

Colors: Charcoal, Orange **Case QTY:** 1 **Case Weight:** 20lbs / 9.07 kg



MSRP/CASE

SM/MD: **\$1302.18**

LG/XL: **\$1302.18**

2X/3X: **\$1432.40**

4XL: **\$1497.52**

Z5H582-94C2RPBC

Zytron® 500 NFPA 1990 (1994) Class 2 Certified Vapor Total Encapsulating Suit. Front Entry AquaSeal® Gas-Tight Zipper, Double Storm Flaps with Hook & Loop Closure, Expanded View AntiFog Visor System, Expanded Back, Field Replaceable 2N1® Glove System and Removable Nomex or Nomex/leather Overgloves, Attached Sock Booties with Splash Guards, 2 Exhaust Valves and Radio Pocket. Berry Compliant.

Heat Sealed / Taped Seams.

Colors: Charcoal, Orange **Case QTY:** 1 **Case Weight:** 20lbs / 9.07 kg



MSRP/CASE

SM/MD: **\$1646.72**

LG/XL: **\$1646.72**

2X/3X: **\$1811.40**

4XL: **\$1893.71**

Z5H583

Zytron® 500 Vapor Total Encapsulating Suit. (HazMat Model) Rear Entry AquaSeal® Gas-Tight Zipper, Double Storm Flaps with Hook & Loop Closure, Expanded View AntiFog Visor System with Additional FEP Overlay, Expanded Back, Attached Field Replaceable 2N1® Glove System, Attached Sock Booties with Splash Guards, 2 Exhaust Valves.

Heat Sealed / Taped Seams.

Colors: Charcoal, Orange **Case QTY:** 1 **Case Weight:** 20lbs / 9.07 kg



MSRP/CASE

SM/MD: **\$1302.18**

LG/XL: **\$1302.18**

2X/3X: **\$1432.40**

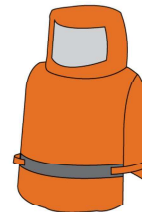
4XL: **\$1497.52**

Z5H750

Zytron® 500 Hood. Overhood, PVC Visor, Flat Back, Waist Length, Hook & Loop Fasteners on Sides.

Heat Sealed / Taped Seams.

Colors: Orange **Case QTY:** 3 **Case Weight:** 20lbs / 9.07 kg



MSRP/CASE

One Size: **\$335.09**

Z5S555

Zytron® 500 Training Suit. Front Entry Zipper, Double Storm Flaps with Hook & Loop Closure, Large PVC Visor, Expanded Back, Permanently Attached PVC Gloves, Attached Sock Booties with Splash Guards, 1 Exhaust Port.

Serged Seams.

Colors: Charcoal, Orange **Case QTY:** 1 **Case Weight:** 20lbs / 9.07 kg



MSRP/CASE

SM/MD: **\$317.60**

LG/XL: **\$317.60**

2X/3X: **\$349.37**

4XL: **\$365.23**

Z5S556

Zytron® 500 Training Suit. Rear Entry Zipper, Double Storm Flaps with Hook & Loop Closure, Large PVC Visor, Expanded Back, Permanently Attached PVC Gloves, Attached Sock Booties with Splash Guards, 1 Exhaust Port.

Serged Seams.

Colors: Charcoal, Orange **Case QTY:** 1 **Case Weight:** 20lbs / 9.07 kg



MSRP/CASE

SM/MD: **\$317.60**

LG/XL: **\$317.60**

2X/3X: **\$349.37**

4XL: **\$365.23**

FRONTLINE 300

F3H429

Frontline® 300 Coverall. Attached Hood with Front Zipper Entry with LongNeck™ Respirator-Fit Closure, Double Storm Flaps with FR Hook & Loop Closure, Glove Cone Inserts.

Heat Sealed / Taped Seams.

Colors: Silver **Case QTY:** 2 **Case Weight:** 20lbs / 9.07 kg



MSRP/CASE

SM/MD: **\$680.41**

LG/XL: **\$680.41**

2X/3X: **\$748.45**

4XL: **\$782.47**

F3H436 5R

Frontline® 300 Coverall. Attached Hood with Elastic Face Opening, Front Entry Zipper with LongNeck™ Respirator-Fit Closure, Double Storm Flaps with FR Hook & Loop Closure, Permanently Attached 2N1® Glove System with Additional Kevlar Glove, Attached Sock Booties with Splash Guards.

Heat Sealed / Taped Seams.

Colors: Silver **Case QTY:** 2 **Case Weight:** 20lbs / 9.07 kg



MSRP/CASE

SM/MD: **\$1148.24**

LG/XL: **\$1148.24**

2X/3X: **\$1263.08**

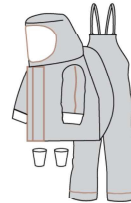
4XL: **\$1320.48**

F3H620

Frontline® 300 Multi-Piece Configuration Expanded Back Half C Jacket (F3H760), Glove Cone Inserts (AG0AR), Bib Trousers (F3H660), CP Cuffs.

Heat Sealed / Taped Seams.

Colors: Silver **Case QTY:** 1 **Case Weight:** 20lbs / 9.07 kg



MSRP/CASE

SM/MD: **\$582.75**

LG/XL: **\$582.75**

2X/3X: **\$641.03**

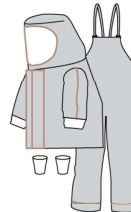
4XL: **\$670.17**

F3H621

Frontline® 300 Multi-Piece Configuration. Flat Back Half C Jacket (F3H761), Glove Cone Inserts (AG0AR), Bib Trousers (F3H660), CP Cuffs.

Heat Sealed / Taped Seams.

Colors: Silver **Case QTY:** 1 **Case Weight:** 20lbs / 9.07 kg



MSRP/CASE

SM/MD: **\$582.75**

LG/XL: **\$582.75**

2X/3X: **\$641.03**

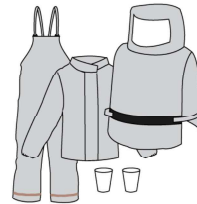
4XL: **\$670.17**

F3H630

Frontline® 300 Multi-Piece Configuration. Jacket (F3H675), Glove Cone Inserts (AG0AR), Bib Trousers (F3H660), Hood (F3H750).

Heat Sealed / Taped Seams.

Colors: Silver **Case QTY:** 1 **Case Weight:** 20lbs / 9.07 kg



MSRP/CASE

SM/MD: **\$786.29**

LG/XL: **\$786.29**

2X/3X: **\$864.91**

4XL: **\$904.22**

F3H660

Frontline® 300 Bib Trousers. Adjustable FR Webbing Straps and Snap-Lock Fasteners.

Heat Sealed / Taped Seams.

Colors: Silver **Case QTY:** 1 **Case Weight:** 10lbs / 4.54 kg



MSRP/CASE

SM/MD: **\$297.33**

LG/XL: **\$297.33**

2X/3X: **\$327.06**

4XL: **\$341.93**

F3H675

Frontline® 300 Jacket. Zipper Front, Double Storm Flaps with FR Hook & Loop Closure, Elastic Wrists, Glove Cone Inserts.

Heat Sealed / Taped Seams.

Colors: Silver **Case QTY:** 1 **Case Weight:** 10lbs / 4.54 kg



MSRP/CASE

SM/MD: **\$240.65**

LG/XL: **\$240.65**

2X/3X: **\$264.72**

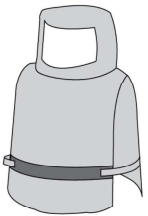
4XL: **\$276.76**

F3H750

Frontline® 300 Hood. Overhood, PVC Visor, Flat Back, Waist Length, FR Hook & Loop Fasteners on Sides.

Heat Sealed / Taped Seams.

Colors: Silver Case QTY: 1 Case Weight: 20lbs / 9.07 kg



MSRP/CASE
One Size: **\$238.76**

F3H761

Frontline® 300 Half C Jacket. Front Entry Zipper, Double Storm Flaps with FR Hook & Loop Closure, 40 mil PVC Visor, Flat Back, Glove Cone Inserts.

Heat Sealed / Taped Seams.

Colors: Silver Case QTY: 1 Case Weight: 20lbs / 9.07 kg



MSRP/CASE
SM/MD: **\$398.24**
LG/XL: **\$398.24**
2X/3X: **\$438.08**
4XL: **\$457.98**

FRONTLINE 500

F5H582-91

Frontline® 500 NFPA 1990 (1991) Certified Vapor Total Encapsulating Suit Front Entry AquaSeal® Gas-Tight Zipper, Double Storm Flaps with FR Hook & Loop Closure, Expanded View AntiFog Visor System with Additional FEP Overlay, Expanded Back, Field Replaceable 2N1® Glove System and Removable Nomex/Leather Overgloves, Attached Sock Booties with Splash Guards, Knee Reinforcements, 2 Exhaust Valves.

Heat Sealed / Taped Seams.

Colors: Silver Case QTY: 1 Case Weight: 18lbs / 8.16 kg



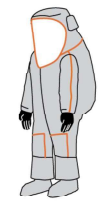
MSRP/CASE
SM/MD: \$3357.96
LG/XL: \$3357.96
2X/3X: \$3693.75
4XL: \$3861.64

F5H583-91

Frontline® 500 NFPA 1990 (1991) Certified Vapor Total Encapsulating Suit Rear Entry AquaSeal® Gas-Tight Zipper, Double Storm Flaps with FR Hook & Loop Closure, Expanded View AntiFog Visor System with Additional FEP Overlay, Expanded Back, Field Replaceable 2N1® Glove System and Removable Nomex/Leather Overgloves, Attached Sock Booties with Splash Guards, Knee Reinforcements, 2 Exhaust Valves.

Heat Sealed / Taped Seams.

Colors: Silver Case QTY: 1 Case Weight: 18lbs / 8.16 kg



MSRP/CASE
SM/MD: \$3357.96
LG/XL: \$3357.96
2X/3X: \$3693.75
4XL: \$3861.64

TRAINING SUITS

VCS555

PVC Training Suit. Front Entry Zipper, Double Storm Flaps with Hook & Loop Closure, Large PVC Visor, Expanded Back, Permanently Attached PVC Gloves, Attached Sock Booties with Splash Guards, 1 Exhaust Port.

Serged Seams.

Colors: Yellow Case QTY: 1 Case Weight: 20lbs / 9.07 kg



VCS556

PVC Training Suit. Rear Entry Zipper, Double Storm Flaps with Hook & Loop Closure, Large PVC Visor, Expanded Back, Permanently Attached PVC Gloves, Attached Sock Booties with Splash Guards, 1 Exhaust Port.

Serged Seams.

Colors: Yellow Case QTY: 1 Case Weight: 20lbs / 9.07 kg



D5S458

DuraChem® 500 Training Suit. Coverall with Attached Hood with Sure-Fit® Respirator Face Piece Seal, Rear Entry Zipper, Single Storm Flap with Hook & Loop Closure, Permanently Attached PVC Gloves, Attached Sock Booties with Splash Guards, with Hook & Loop Fasteners at Ankles.

Heat Sealed / Taped Seams.

Colors: Khaki, Navy Case QTY: 1 Case Weight: 9lbs / 4.08 kg



D5S457

DuraChem® 500 Training Suit. Coverall with Attached Hood with Sure-Fit® Respirator Face Piece Seal, Front Entry Zipper, Single Storm Flap with Hook & Loop Closure, Permanently Attached PVC Gloves, Attached Sock Booties with Splash Guards, with Hook & Loop Fasteners at Ankles.

Heat Sealed / Taped Seams.

Colors: Khaki, Navy **Case QTY:** 1 **Case Weight:** 9lbs / 4.08 kg



Z1B556XP

Zytron® 100XP Training Suit. Rear Entry Zipper, Double Storm Flaps with Hook & Loop Closure, Large PVC Visor, Expanded Back, Permanently Attached PVC Gloves, Attached Sock Booties with Splash Guards, 1 Exhaust Port.

Bound Seams.

Colors: Blue **Case QTY:** 6 **Case Weight:** 20lbs / 9.07 kg



Z5S555

Zytron® 500 Training Suit. Front Entry Zipper, Double Storm Flaps with Hook & Loop Closure, Large PVC Visor, Expanded Back, Permanently Attached PVC Gloves, Attached Sock Booties with Splash Guards, 1 Exhaust Port.

Serged Seams.

Colors: Charcoal, Orange **Case QTY:** 1 **Case Weight:** 20lbs / 9.07 kg



Z5S556

Zytron® 500 Training Suit. Rear Entry Zipper, Double Storm Flaps with Hook & Loop Closure, Large PVC Visor, Expanded Back, Permanently Attached PVC Gloves, Attached Sock Booties with Splash Guards, 1 Exhaust Port.

Serged Seams.

Colors: Charcoal, Orange **Case QTY:** 1 **Case Weight:** 20lbs / 9.07 kg



ACCESSORIES

ChemTape®

ChemTape is Kappler's patented chemical-resistant tape designed specifically for protective apparel. Provides added assurance for taping around gloves, boots, respirators and storm flaps, plus shelter-in-place applications. Rolls are 2" x 60 yd (48mm wide x 55 meters long). Style Code: 99402 YW

Case QTY: 24 **Case Weight:** 52lbs / 23.58 kg



Glove Cone Inserts

Kappler Male Glove Insert Cones for Use with Chemical Splash Coveralls with Elastic Wrists. Used to Interface Glove to Suit and Provide Smooth Taping Surface. Style Code: AG0AR

Case QTY: 1 **Case Weight:** 1lbs / 0.45 kg



Gloves

Butyl Gloves, Guardian CP-25. Style Code: AG0GB

Case QTY: 1 **Case Weight:** 1lbs / 0.45 kg



Pirelli Exhalation Valve

Style Code: AV0R0

Case QTY: 1 **Case Weight:** 2lbs / 0.91 kg



Draeger Exhalation Valve

Style Code: AV0R2

Case QTY: 1 **Case Weight:** 2lbs / 0.91 kg



Chemical Protective HazProof Boots

Tingley Chemical Protective HazProof boots; Oversized Design to Accommodate Chemical Suit Sock Boot; Order Regular Shoe Size*; Tapered Top Opens Wide for Easy Donning; Easy Replaceable Closure Tabs. Style Code: AR0B0

Case QTY: 1 **Case Weight:** 9.5lbs / 4.31 kg



Anti-Fog Solution

Kappler Anti-Fog Solution for use with Chemical Suit Faceshields or Any Other Faceshield to Alleviate Fogging. Non-toxic; Inert. 2 oz Spray Bottle. Packed 1 per case. Style Code: A00R5

Case QTY: 1 **Case Weight:** 1lbs / 0.45 kg



Digital Pressure Test Kit

Kappler's automated Digital Pressure Test Kit improves the efficiency and accuracy of gas-tight garment tests for both ASTM and CE methods. Our unique design features a digital readout for more accurate testing, while a large LCD touchscreen allows easy test criteria selection and data input. All fittings and hoses are included – the user simply provides an air supply with a 1/4 inch MNPT fitting. Press START and the test is performed automatically, allowing the user to handle other duties while the test is in process. For easy and accurate record-keeping, test data can be copied to the provided USB stick via the built-in USB port. Style Code: AKMOC

Case QTY: 1 **Case Weight:** 20lbs / 9.07 kg



Digital Pressure Test Kit Sure-Fit® Face Seal Adapter

The Sure-Fit Face Seal Adapter interfaces with the Sure-Fit Respirator Face Piece Seal on Kappler non-encapsulating gas-tight garments for use with the Digital Pressure Test Kit (AKMO). Style Code: AKM007

Case QTY: 1 **Case Weight:** 1lbs / 0.45 kg

